

London Bridge

more words on next page

Arr: Gilbert DeBenedetti

C $\frac{4}{2}$ G7 C

2 1 2

Lon - don Bridge is fall - ing down, Fall - ing down, Fall - ing down,

1
5

Detailed description: This system of musical notation is for the first four measures of the song. The top staff is in treble clef with a common time signature (C) and a 4/2 time signature. The bottom staff is in bass clef. The melody in the treble clef consists of quarter notes: G4, A4, B4, C5, G4, F4, E4, D4. The bass line consists of whole notes: C3, G2, F2, E2. Chord symbols C, G7, and C are placed above the staff. Fingerings 2, 1, and 2 are indicated above the notes G4, C5, and G4 respectively. The lyrics 'Lon - don Bridge is fall - ing down, Fall - ing down, Fall - ing down,' are written below the treble staff. A '1' and '5' are written below the bass staff.

$\frac{4}{2}$ G7 C

1 4 2 1

Lon - don Bridge is fall - ing down, My fair la - dy.

Detailed description: This system of musical notation is for the next four measures. The top staff is in treble clef with a 4/2 time signature. The bottom staff is in bass clef. The melody in the treble clef consists of quarter notes: G4, A4, B4, C5, G4, F4, E4, D4. The bass line consists of whole notes: C3, G2, F2, E2. Chord symbols G7 and C are placed above the staff. Fingerings 1, 4, 2, and 1 are indicated above the notes G4, C5, G4, and F4 respectively. The lyrics 'Lon - don Bridge is fall - ing down, My fair la - dy.' are written below the treble staff.

more words on next page

More sheet music at:
www.gmajormusictheory.org



London Bridge

As quoted by Iona and Peter Opie in 1951

source: www.wikipedia.org

London Bridge is broken down,
Falling down, falling down.
London Bridge is falling down,
My fair lady.

Build it up with wood and clay,
Wood and clay, wood and clay,
Build it up with wood and clay,
My fair lady.

Wood and clay will wash away,
Wash away, wash away,
Wood and clay will wash away,
My fair lady.

Build it up with bricks and mortar,
Bricks and mortar, bricks and mortar,
Build it up with bricks and mortar,
My fair lady.

Bricks and mortar will not stay,
Will not stay, will not stay,
Bricks and mortar will not stay,
My fair lady.

Build it up with iron and steel,
Iron and steel, iron and steel,
Build it up with iron and steel,
My fair lady.

Iron and steel with bend and bow,
Bend and bow, bend and bow,
Iron and steel with bend and bow,
My fair lady.

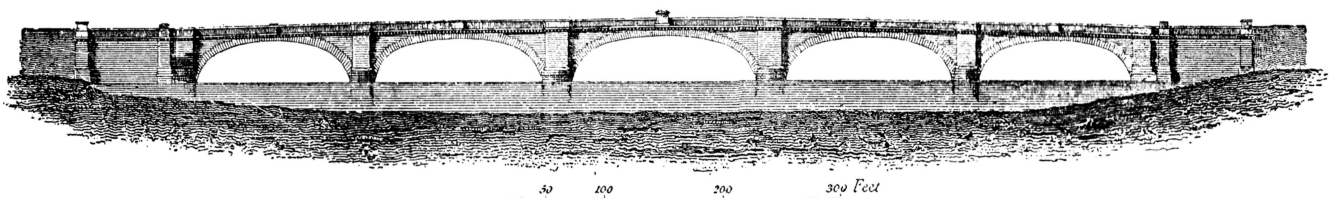
Build it up with silver and gold,
Silver and gold, silver and gold,
Build it up with silver and gold,
My fair lady.

Silver and gold will be stolen away,
Stolen away, stolen away,
Silver and gold will be stolen away,
My fair lady.

Set a man to watch all night,
Watch all night, watch all night,
Set a man to watch all night,
My fair lady.

Suppose the man should fall asleep,
Fall asleep, fall asleep,
Suppose the man should fall asleep,
My fair lady.

Give him a pipe to smoke all night,
Smoke all night, smoke all night,
Give him a pipe to smoke all night,
My fair lady.



More sheet music at:
www.gmajormusictheory.org

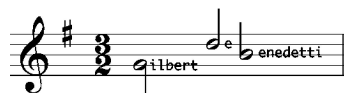


Image of the "New" London Bridge from:
The Encyclopedia Britannica, New Warner Edition (New York: The Werner Company, 1893)
courtesy of Educational Technology Clearing House at: <http://etc.usf.edu/clipart>